

Flume added
due to complete
failure of
shoulder
section

From STA 11+00
Flume washed out of aggregate

CITY OF AUSTIN
BALCONES DISTRICT PARK
AMHERST DR 78727
ABS. 659 SUR 19 RODGERS J ACR 51.69
C.A.D. NO. 02-6008-05-06

LINE TABLE

LINE	BEARING	DISTANCE
L6	S 84° 18' 43.92" E	62.397'
L7	S 31° 49' 35.50" E	13.1967'
L8	S 24° 26' 35.14" W	25.9036'
L9	S 84° 21' 16.36" E	26.6965'
L10	S 44° 34' 25.66" E	8.9590'
L11	N 64° 17' 56.37" E	79.1981'

C10 Curve Data

P.I. Station	= 16+91.84
Delta	= 108° 47' 51.49" (LT)
Degree	= 229° 10' 59.22"
Tangent	= 34.9181
Length	= 47.4719
Radius	= 25.0000
P.C. Station	= 16+56.92
P.T. Station	= 17+04.39

C11 Curve Data

P.I. Station	= 17+40.14
Delta	= 39° 46' 50.69" (RT)
Degree	= 229° 10' 59.22"
Tangent	= 9.0451
Length	= 17.3576
Radius	= 25.0000
P.C. Station	= 17+31.09
P.T. Station	= 17+48.45

C12 Curve Data

P.I. Station	= 17+75.28
Delta	= 71° 07' 37.97" (LT)
Degree	= 229° 10' 59.22"
Tangent	= 17.8742
Length	= 31.0351
Radius	= 25.0000
P.C. Station	= 17+57.41
P.T. Station	= 17+88.44

- LEGEND
- ROW
 - - - PL - PROPERTY LINE
 - EXIST EDGE OF PAVEMENT
 - EXIST EASEMENT
 - 100-YEAR FLOODPLAIN
 - - - LOC - LIMITS OF CONSTRUCTION
 - PROPOSED CONCRETE TRAIL
 - 780 - EXISTING GROUND CONTOUR
 - 780 - PROPOSED GROUND CONTOUR
 - PROPOSED RETAINING WALL

- NOTES:
- JOINTED PLAIN CONCRETE PAVEMENT WITH JOINTS SPACED AT 10 FEET.
 - SEE SHEETS 4 TO 8 FOR TREE REMOVALS.
 - SEE SHEETS 46 TO 48 FOR TEMPORARY EROSION AND SEDIMENTATION CONTROL PLAN.
 - SEE SHEETS 51 TO 53 FOR PERMANENT REVEGETATION PLAN.
 - AS INDICATED ON PLANS, EXCAVATE AND POUR SLAB ONLY. DO NOT CEMENT STABILIZE BASE.
 - SEE SHEETS 46 THRU 48 FOR LIMITS OF CONSTRUCTION DEFINITION.
 - SEE SHEETS 27 THRU 32 FOR RETAINING WALL DESIGN INFORMATION.

REVISION DESCRIPTION

NO.	DATE	BY	DESCRIPTION
1	7/24/18	TMO	ADD TREE WELL AND REVISE NOTE
2	7/15/19	TMO	ADD SHOULDER VALLEY GUTTER AND FLUME

DATE: 7/15/2019

STATE OF TEXAS
THOMAS M. OWENS
84764
LICENSED PROFESSIONAL ENGINEER

C7 Curve Data

P.I. Station	= 14+78.58
Delta	= 24° 13' 32.94" (LT)
Degree	= 114° 35' 29.61"
Tangent	= 10.7309
Length	= 21.1410
Radius	= 50.0000
P.C. Station	= 14+67.85
P.T. Station	= 14+88.99

C8 Curve Data

P.I. Station	= 15+68.64
Delta	= 52° 29' 08.42" (RT)
Degree	= 163° 42' 08.02"
Tangent	= 17.2547
Length	= 32.0617
Radius	= 35.0000
P.C. Station	= 15+51.39
P.T. Station	= 15+83.45

C9 Curve Data

P.I. Station	= 16+15.36
Delta	= 56° 16' 10.64" (RT)
Degree	= 163° 42' 08.02"
Tangent	= 18.7156
Length	= 34.3732
Radius	= 35.0000
P.C. Station	= 15+96.65
P.T. Station	= 16+31.02

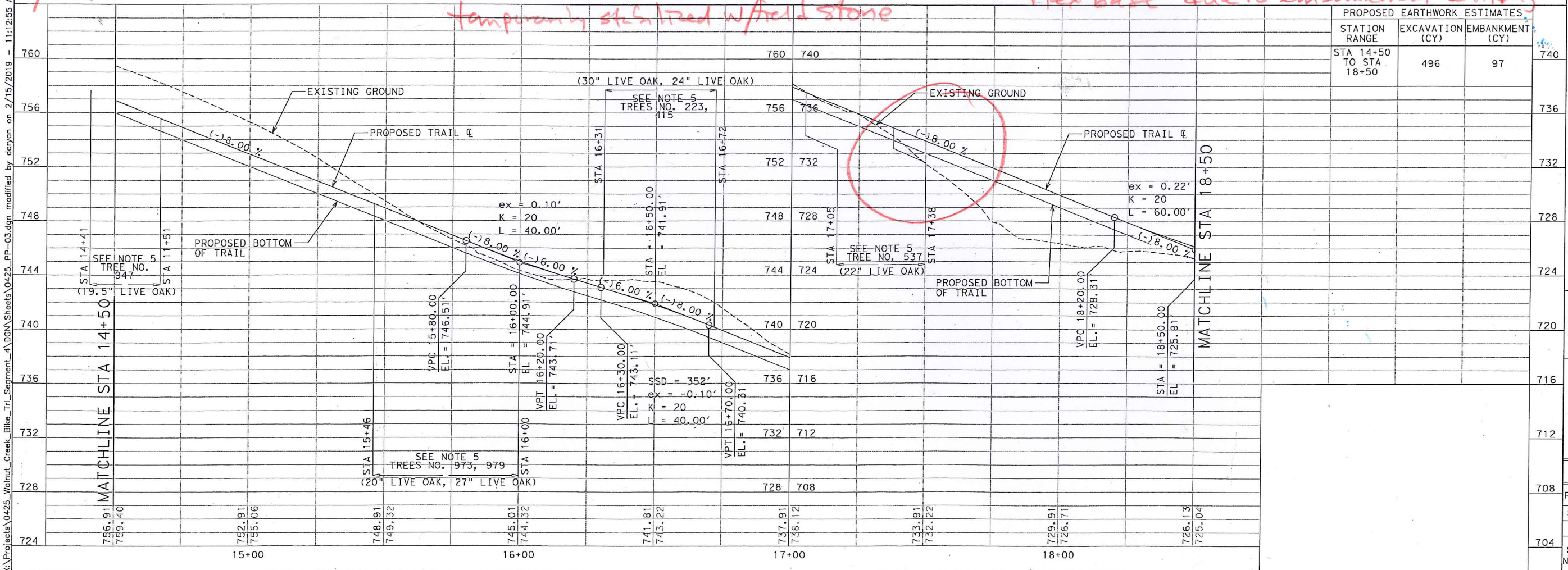
This area
to have flex
base replaced
w/ top soil

Silk Anne
Supporting 18" x 4"
eroded material
Base has aggregate
exposed & migrating
down slope

Base has separated from edge of concrete
& longitudinal cracking within
flex base due to embankment settling

9/19/2019 Site Conditions

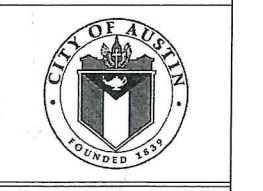
Severe loss of flex base
temporarily stabilized w/ field stone



K FRIESE & ASSOCIATES, INC.
1120 S. CAPITAL OF TEXAS HIGHWAY, CITYVIEW II, SUITE 100, AUSTIN, TEXAS 78746

CITY OF AUSTIN
NORTHERN WALNUT CREEK HIKE AND BIKE TRAIL PHASE 1-A
PLAN AND PROFILE
STA 14+50 TO STA 18+50

K FRIESE + ASSOCIATES
PUBLIC PROJECT ENGINEERING
(FIRM # 6535)



CITY OF AUSTIN

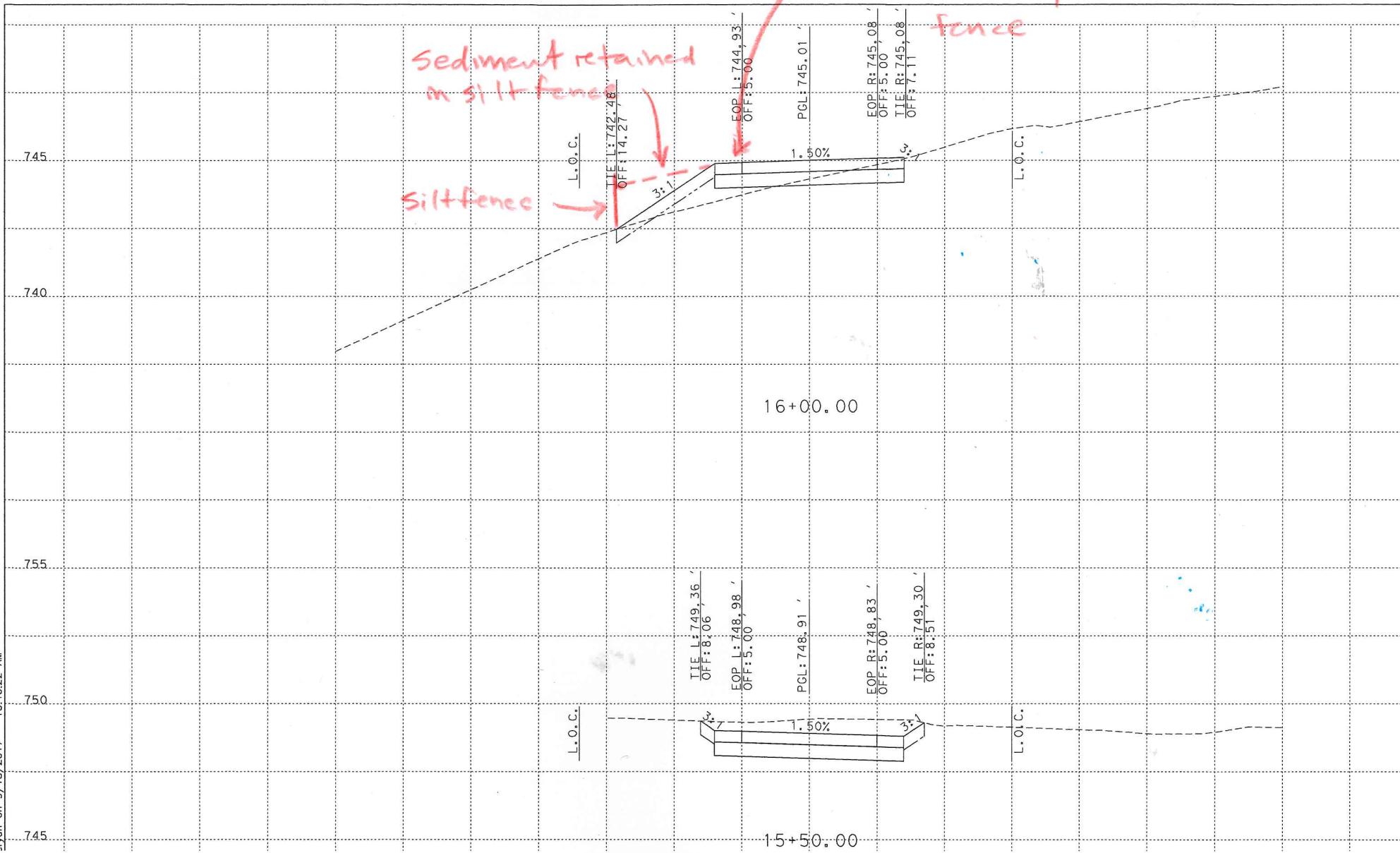
PERMIT # _____

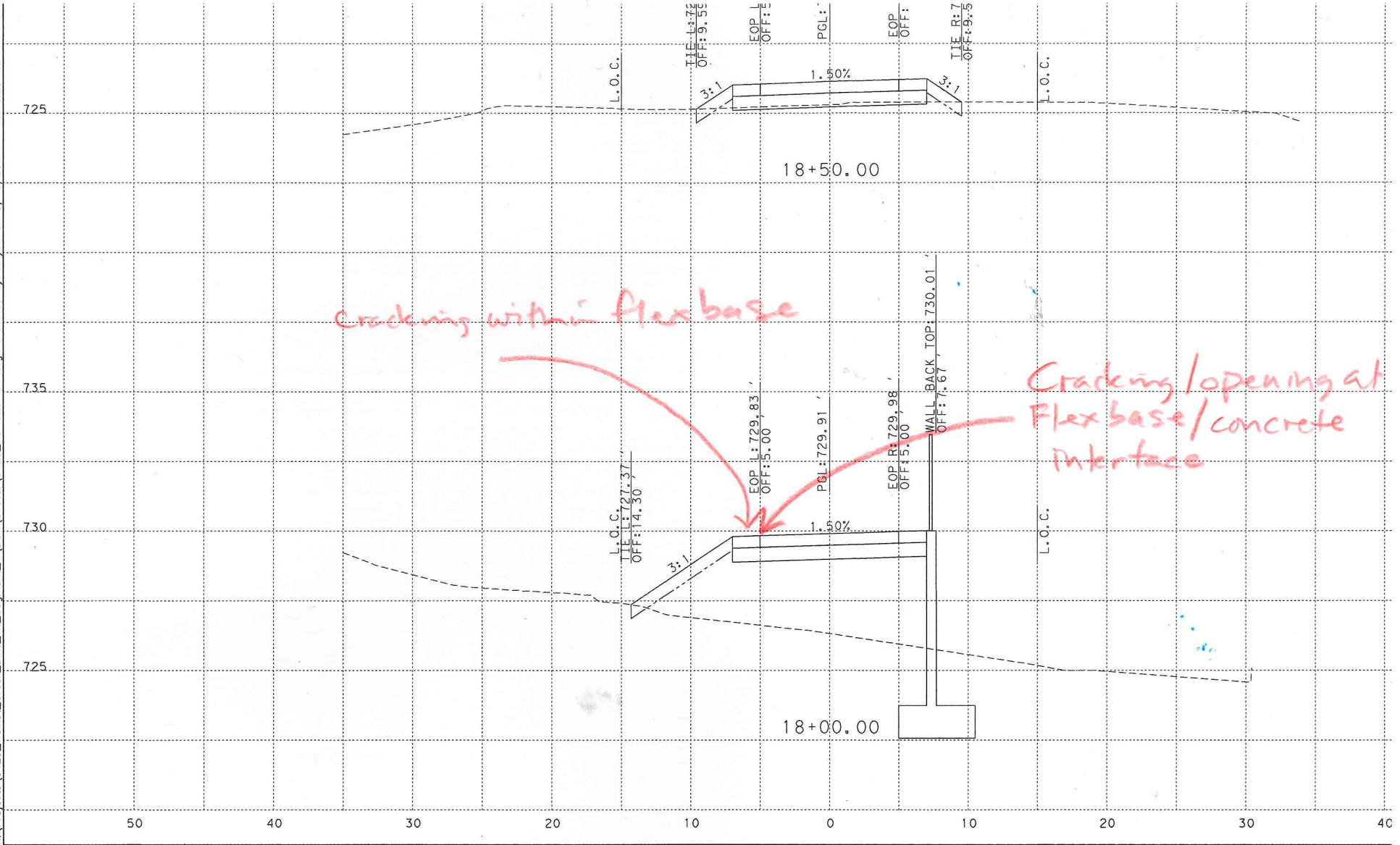
SCALE 1" = 40' H 1" = 4' V

DATE 2/15/2019

SHEET NUMBER 11 OF 75

X:\Projects\0425_Walnut_Creek_Bike_Trail_Segment_4.DGN\Sheets\0425_PP-03.dgn modified by dcray on 2/15/2019 - 11:12:55 AM





Cracking within flex base

Cracking/opening at Flex base/concrete interface