



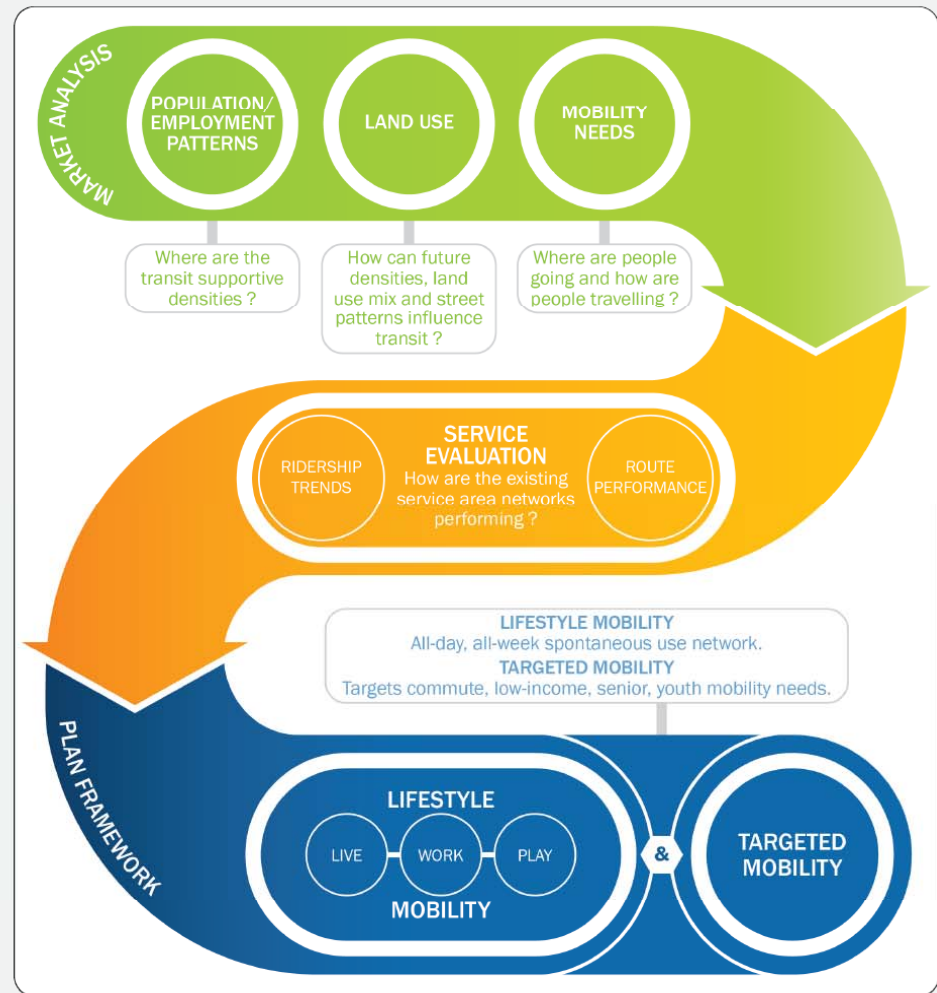
A Transit Plan for the Future

Milwood Neighborhood Association

October 13, 2016

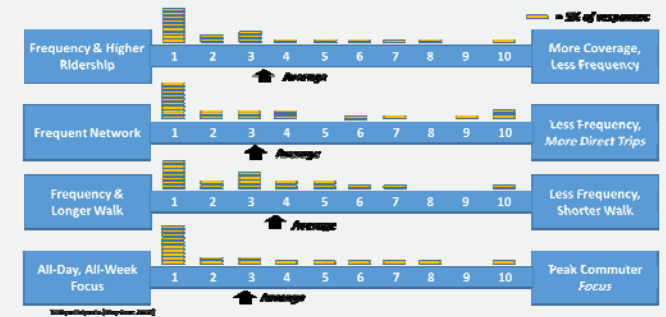
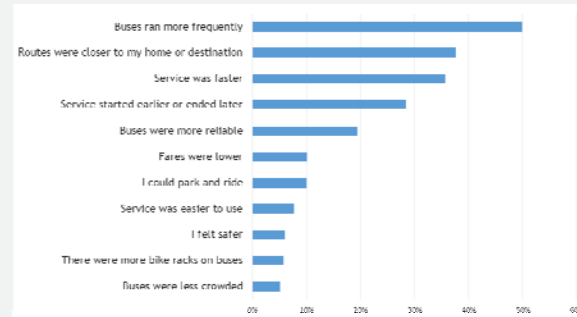
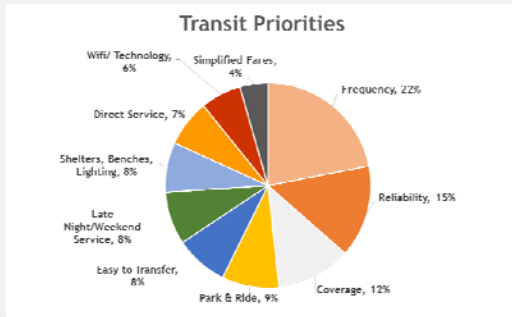
How We Got Here

Market Analysis,
Service Evaluation,
and Plan Framework



What We've Heard

- Frequency has been by far the highest priority based on Connections2025 outreach
- Other key priorities include *coverage, reliability, and speed*



Plan Design Principles



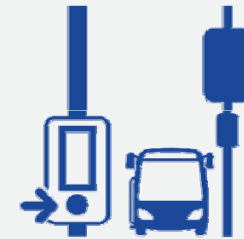
Easy to Understand
Network



Stronger Frequent
Network



Match Service to
Markets



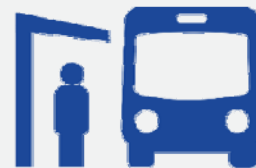
Concentrate on Key
Customer Experience
Attributes



Complement
Emerging Mobility
Initiatives



Grow Ridership and
Productivity









Lay the Groundwork
for the Future



Coordinate Land Use,
Housing,
Infrastructure

Service Options - Mobility Toolbox

					
Rapid Transit	MetroRapid	Frequent Local	Local	Community	Express
Role: Structural network spine, fast regional service, dedicated right-of-way	Role: Structural network spine, fast sub-regional service	Role: Core frequent network	Role: Completes and extends the network	Role: Network connections, local circulation, trip completion	Role: Longer-distance travel focus utilizing limited-access highways
Transit Market Targets					
Lifestyle Commuter	Lifestyle Commuter	Lifestyle	Coverage	Lifestyle Commuter Coverage	Commuter

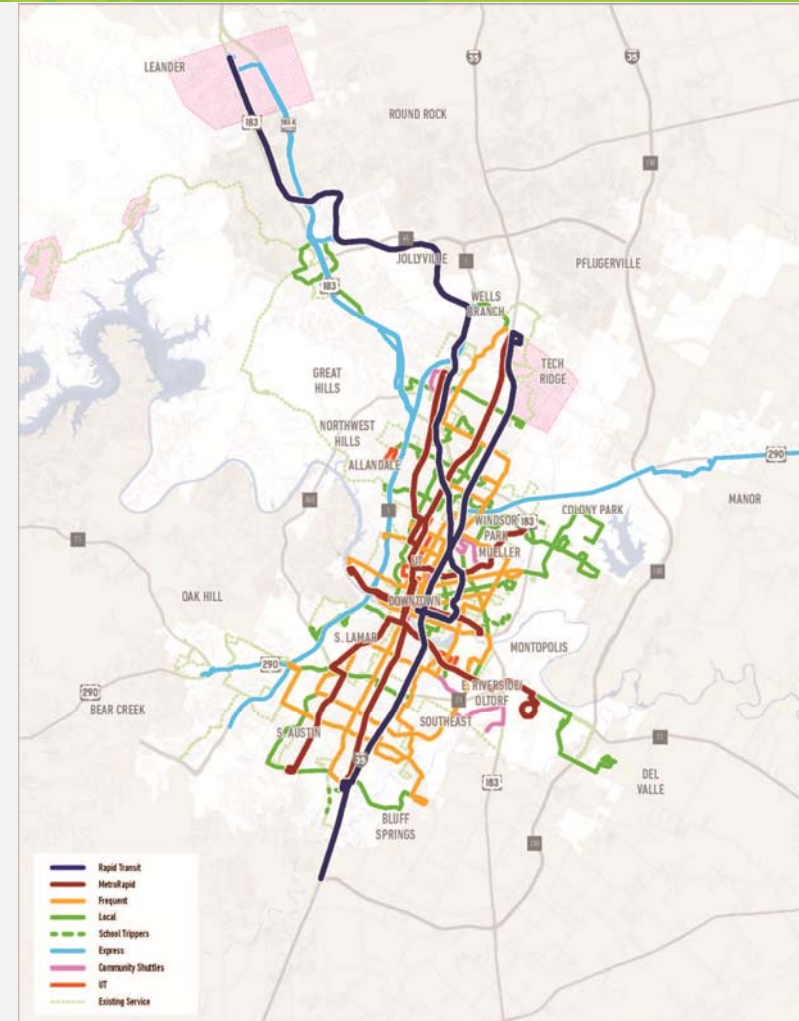
Proposed Plan

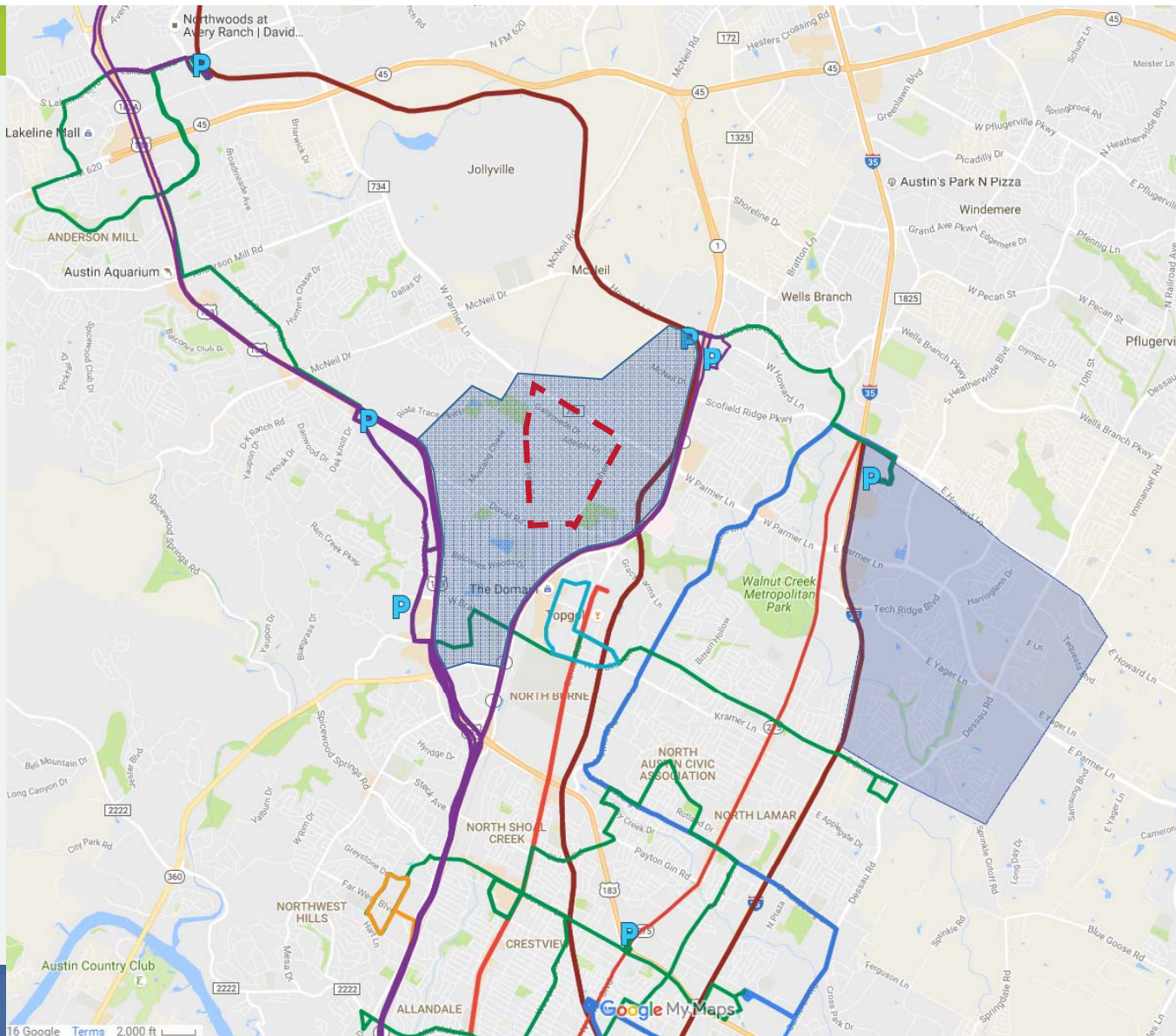


Five Year Service Plan
(Constrained)



Long Range Plan
(Unconstrained)





Frequent Network Benefits

- Proposed Frequent Network can be accessed by 4 out of 5 current riders
- Over ½ of all service-area residents and employees

	Weekday Ridership* (½ Mile)	Population (½ Mile)	Employment (½ Mile)
Existing Frequent Network	50,883 (50%)	331,600 (31%)	302,600 (56%)
Proposed Frequent Network	83,483 (82%)	548,600 (51%)	342,500 (64%)

Source: Capital Metro Sept Ridership, Census 2010, Campo

* Includes Frequent UT Shuttles

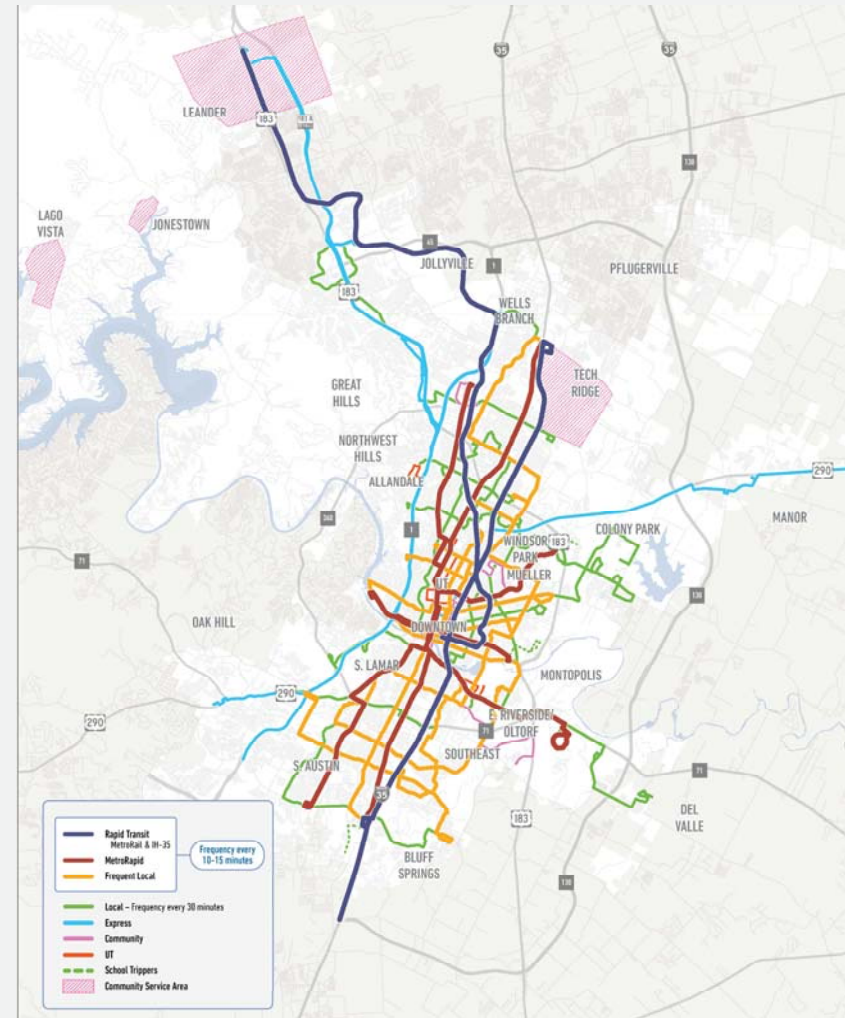
Investment in 17 routes will make a major impact on 82% of today's riders

Cost Implications of Proposed Plan

- Proposed Long Range Plan will require an increase in revenue service hours of **less than 7 percent** compared to FY 2016 budget levels
- Network design strategies kept the net Plan cost down
 - Corridor service consolidation
 - More fast route straight-lining, fewer “twists and turns”
 - Adjustments in route “tails”
 - Substitution of alternative service where fixed route is not performing
- Requires some hard choices

Plan Summary

- Creates more useful, convenient mobility options for community
- An additional 200,000 people will have access to frequent transit
- Applies a proven recipe for success



Community Outreach Strategy



Stakeholder
Workshops



Public Open
Houses



Virtual Meetings

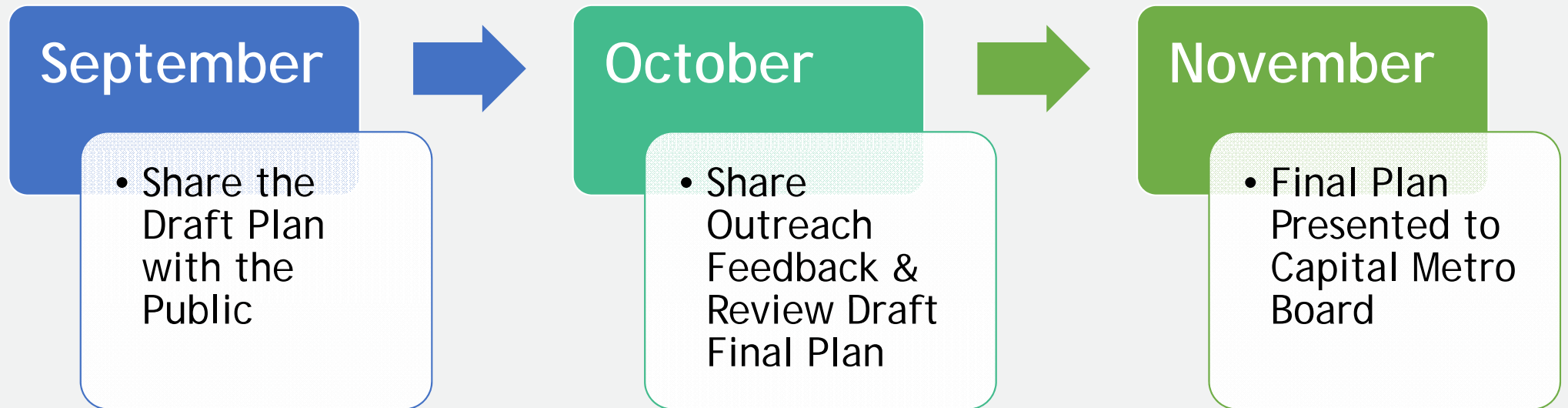


Online Outreach



Drop-In Sessions
at Major Stops

Next Steps





[VIEW THE DRAFT PLAN!](#)

[Home](#)

[Draft Plan](#)

[About the Study](#)

[Resources](#)

[Public Outreach Events](#)

[Blog](#)

[FAQs](#)

MORE FREQUENT. MORE RELIABLE. MORE CONNECTED.


Capital Metro | Connections2025



CONNECTION 2025 PROPOSED TRANSIT NETWORK

Learn all about the Connections 2025 Draft Plan in the sections below or by viewing our short [video](#). Check out the proposed [route descriptions](#) and route information in our interactive map.

Using screen reader? Visit our accessible Connections 2025 Draft Plan [webpage](#).

Click the expand icon  in the top left corner of the interactive map to view individual routes and service types. Checking out the map on a mobile device? Make sure you're using the latest operating version for best viewing.

Share your feedback by taking the survey below, emailing feedback@connections2025.org, calling 512-369-6000 or on [Facebook](#) and [Twitter](#).

+ INTRODUCTION

+ DRAFT PLAN OVERVIEW VIDEO

- DRAFT PLAN RESOURCES

DRAFT NETWORK MAP

GOALS AND STRATEGIES

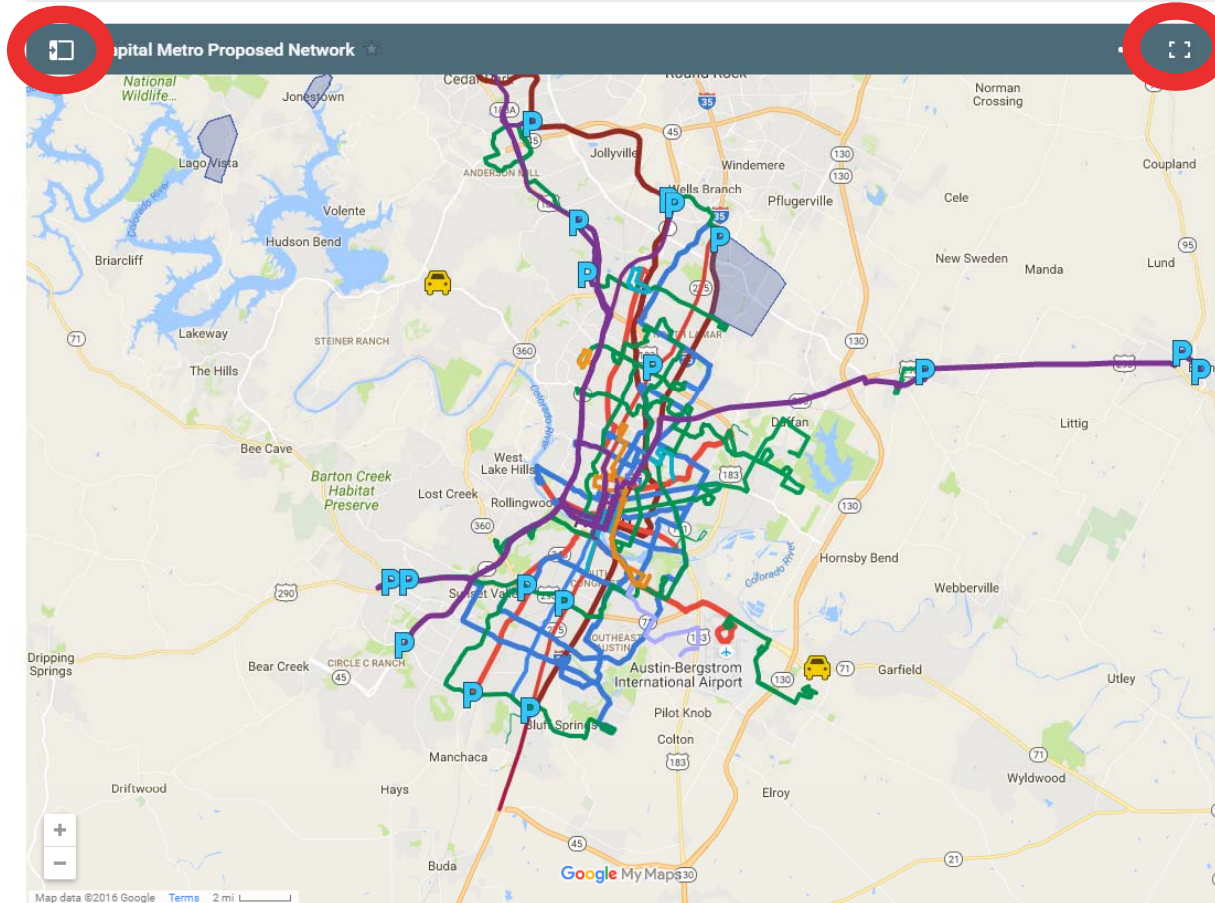
BROCHURE

FREQUENT NETWORK MAP

WEEKDAY RIDERSHIP MAP

ROUTE BY ROUTE PROPOSALS

PROPOSED JANUARY 2017 SERVICE CHANGES



— TAKE THE SURVEY

[Haga clic aquí para Español](#)



Connections 2025 - Draft Plan

We would like your input on the Connection 2025 Draft Transit Plan proposal. The questionnaire below will allow us to gather input and identify any opportunities for improvement.

Learn all about the Connections 2025 Draft Plan by viewing our [short video](#), proposed [route-by-route changes](#) and our [interactive map](#).

1. Which part of the plan do you like the most?

- ☐ More Frequent Service
- ☐ More East/West Service
- ☐ One Basic Fare (Local + Premium)
- ☐ More MetroRapid Service
- ☐ Express Bus Service
- ☐ Other (please specify)

2. Overall, how satisfied are you with the draft Capital Metro Draft Transit Plan recommendations?

- ☐ Very Satisfied



MORE FREQUENT. MORE RELIABLE. MORE CONNECTED.

Capital Metro | Connections2025

www.connections2025.org